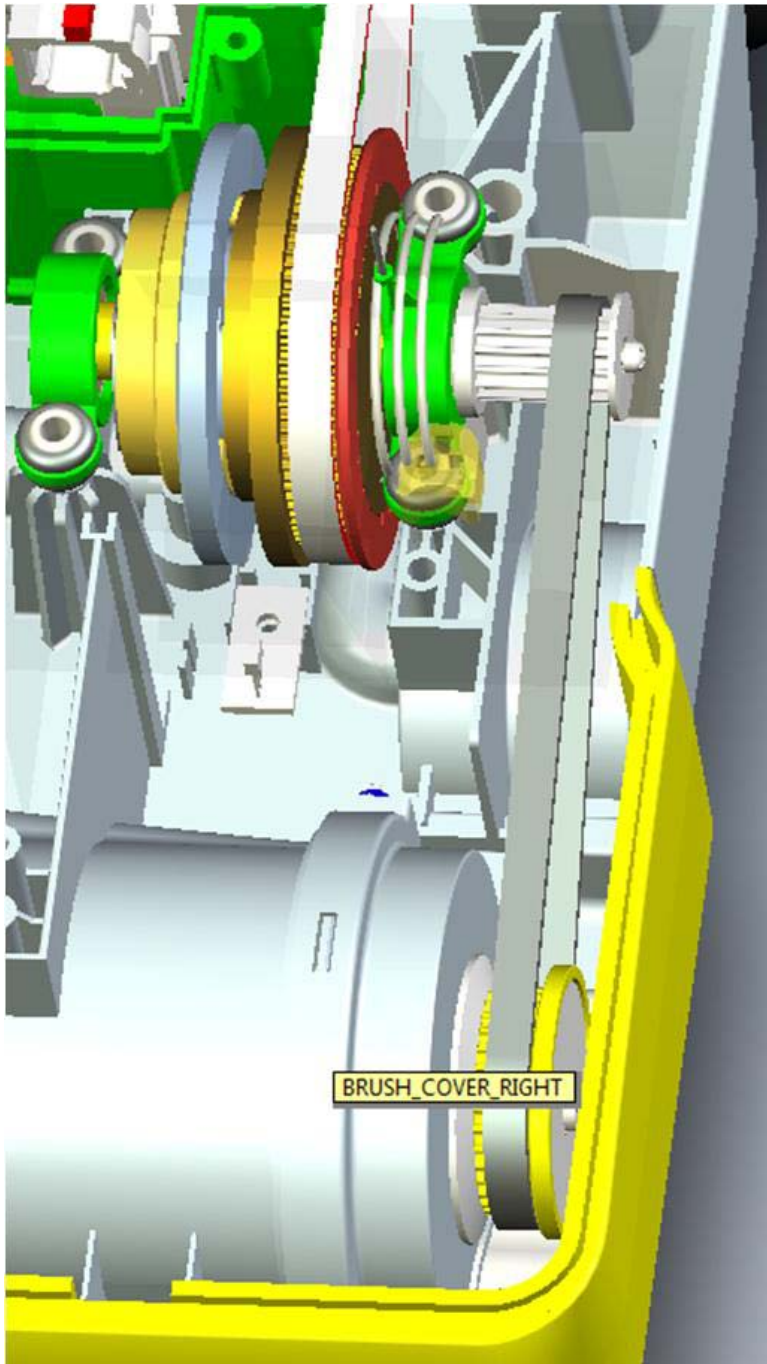
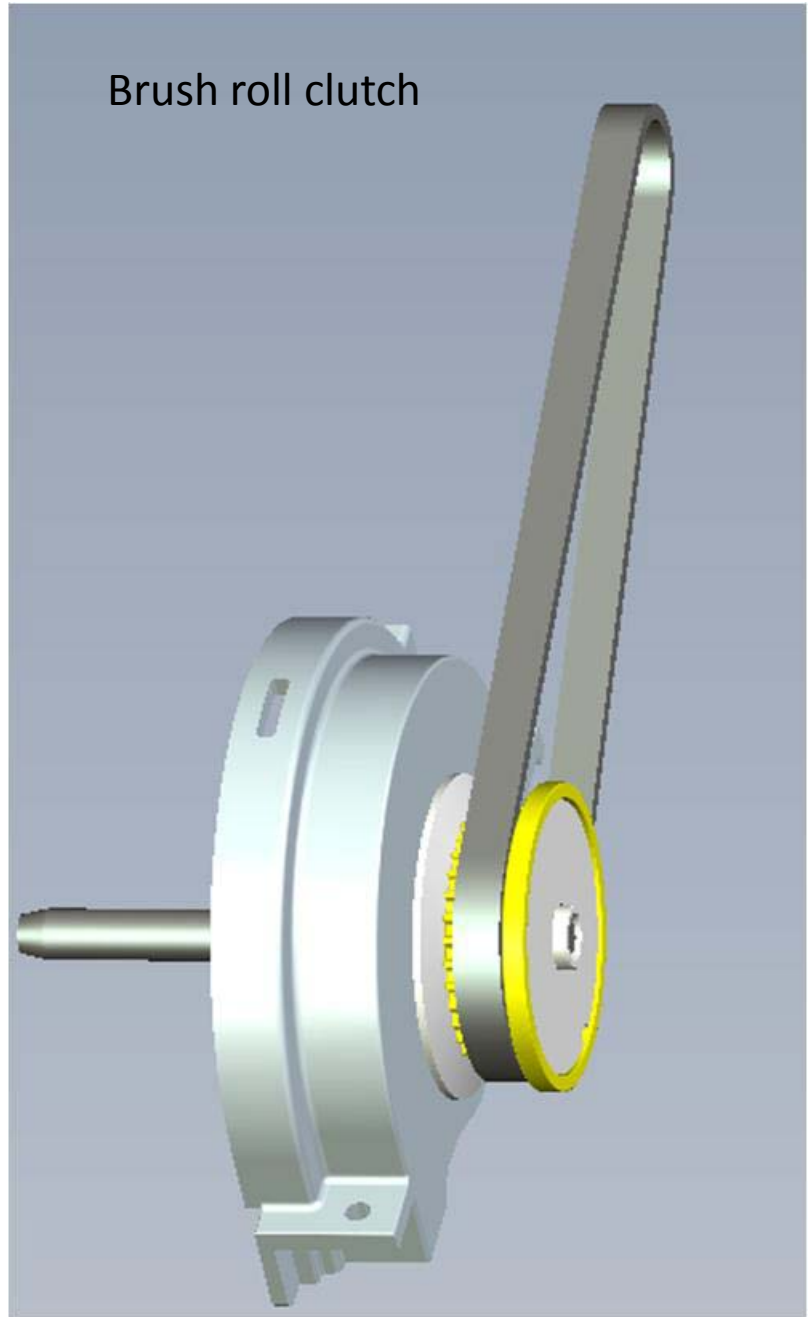
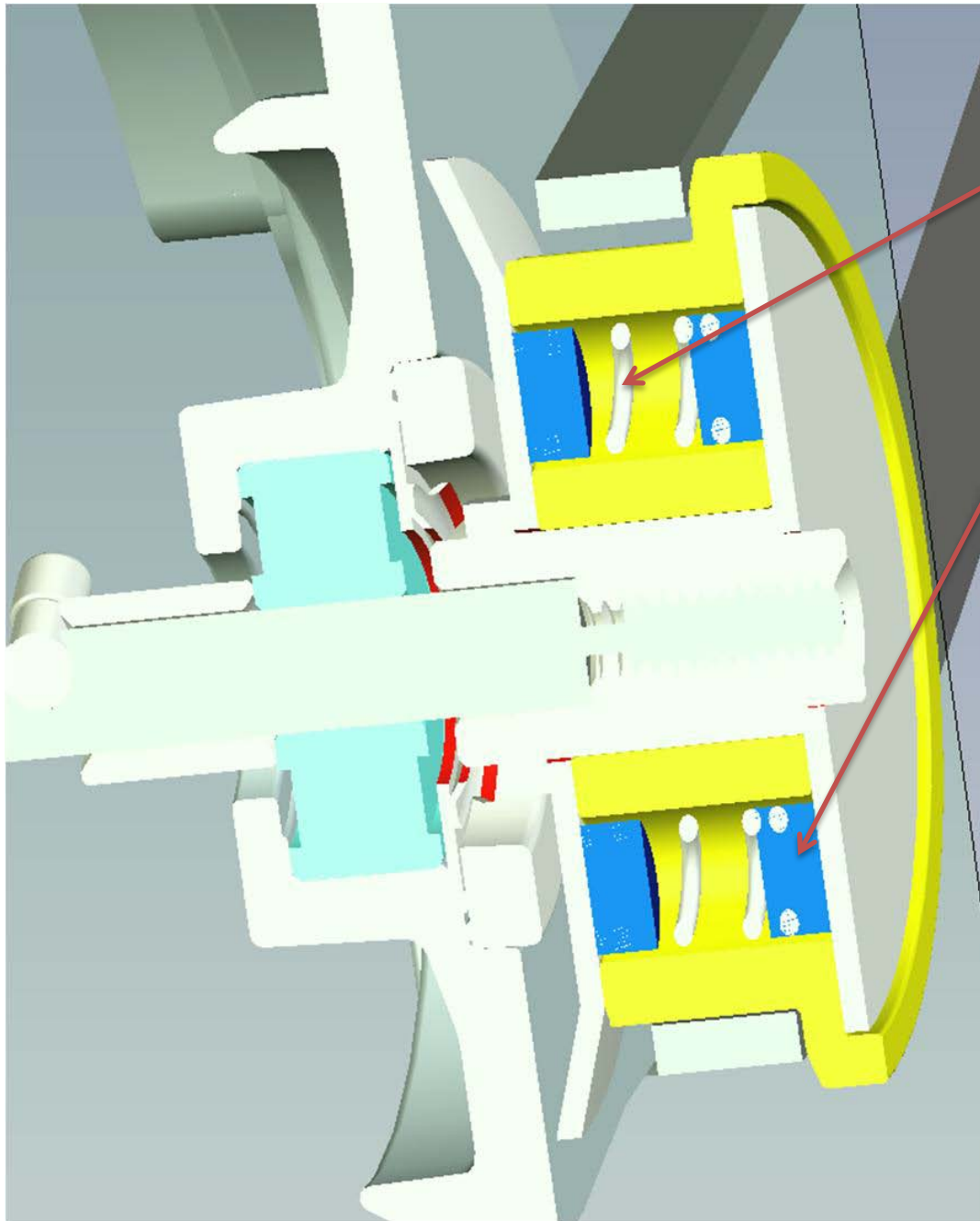


To access belts, remove 5 screws from bottom



Brush roll clutch



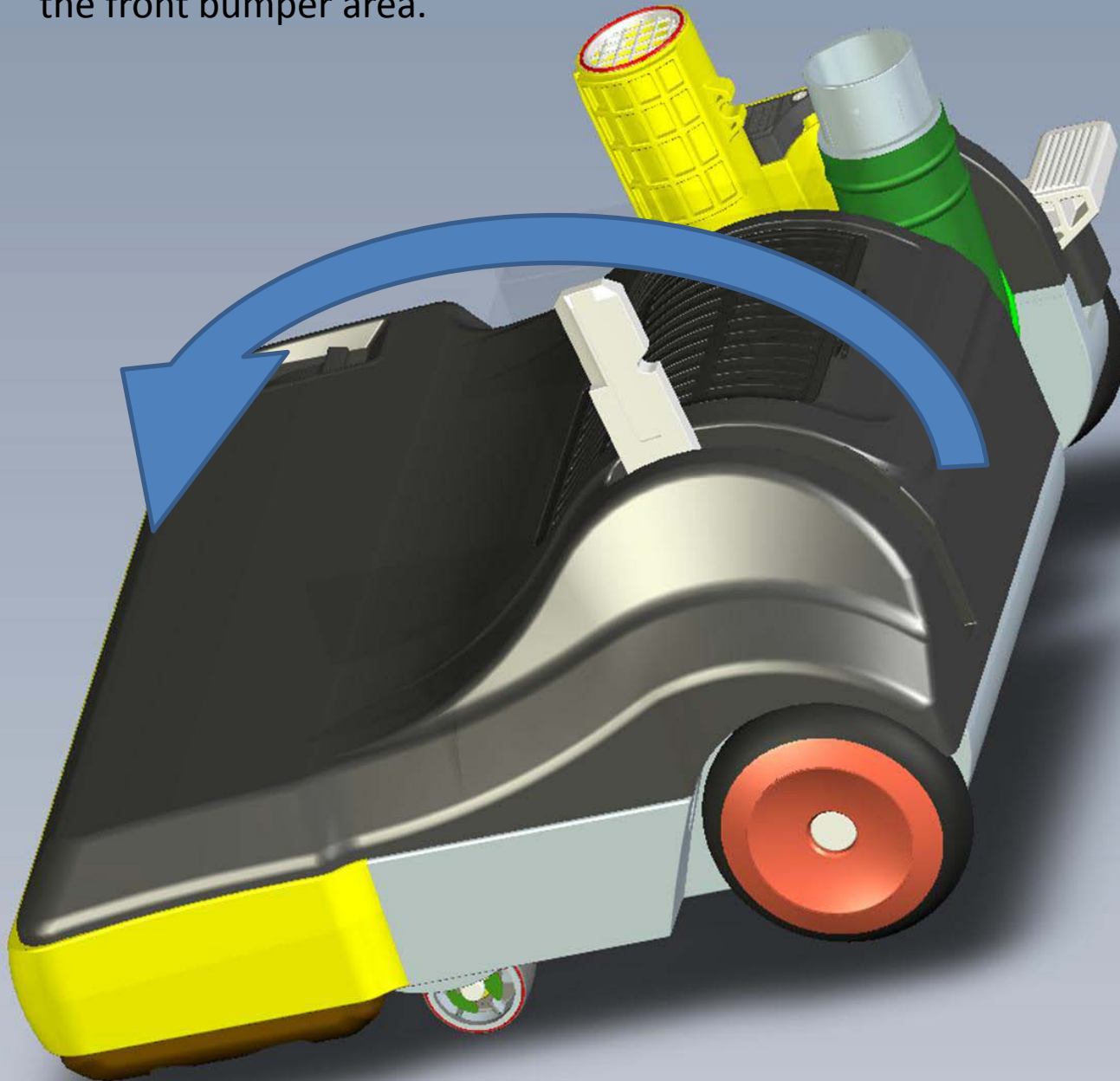


Section view of clutch showing

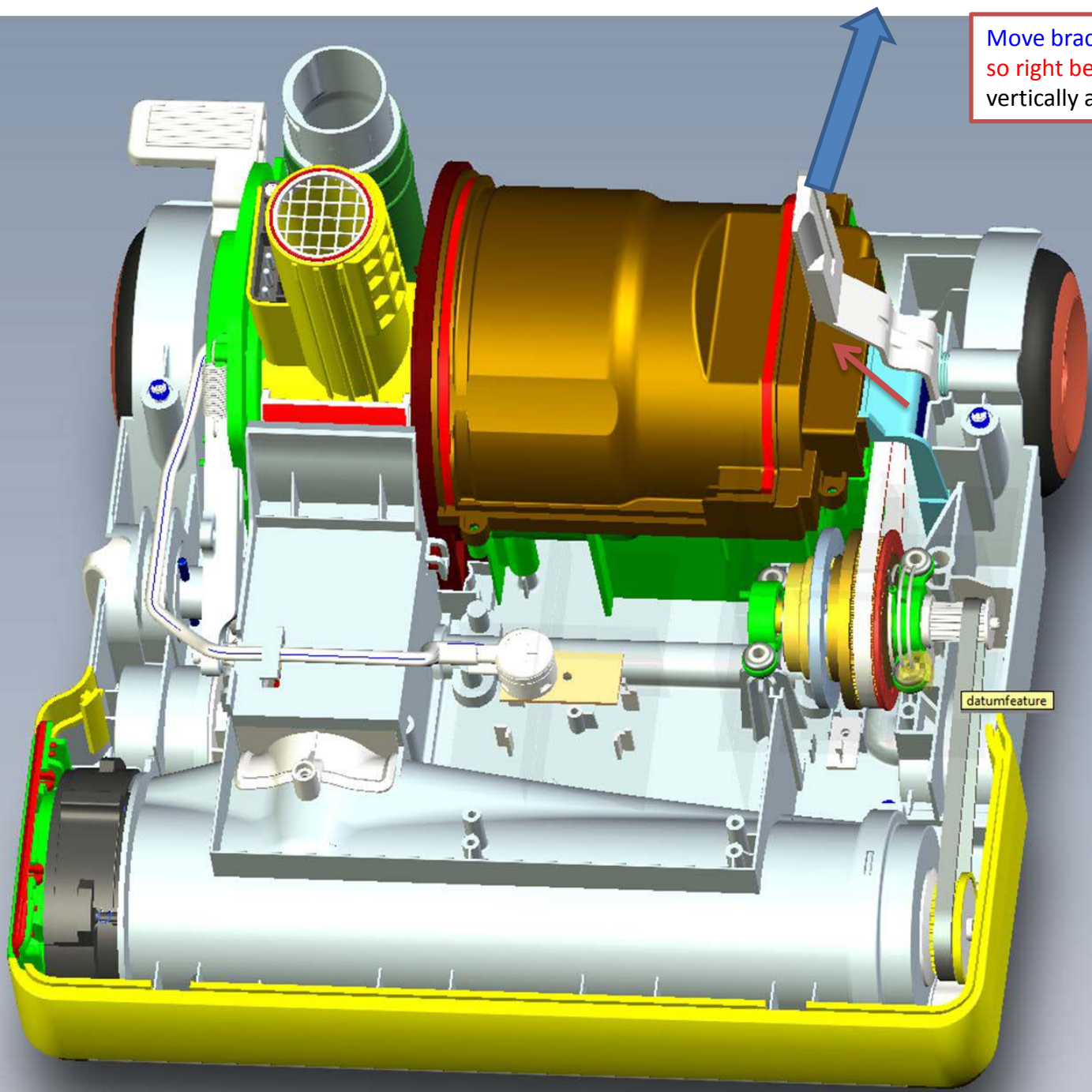
- Springs
- Carbon pads

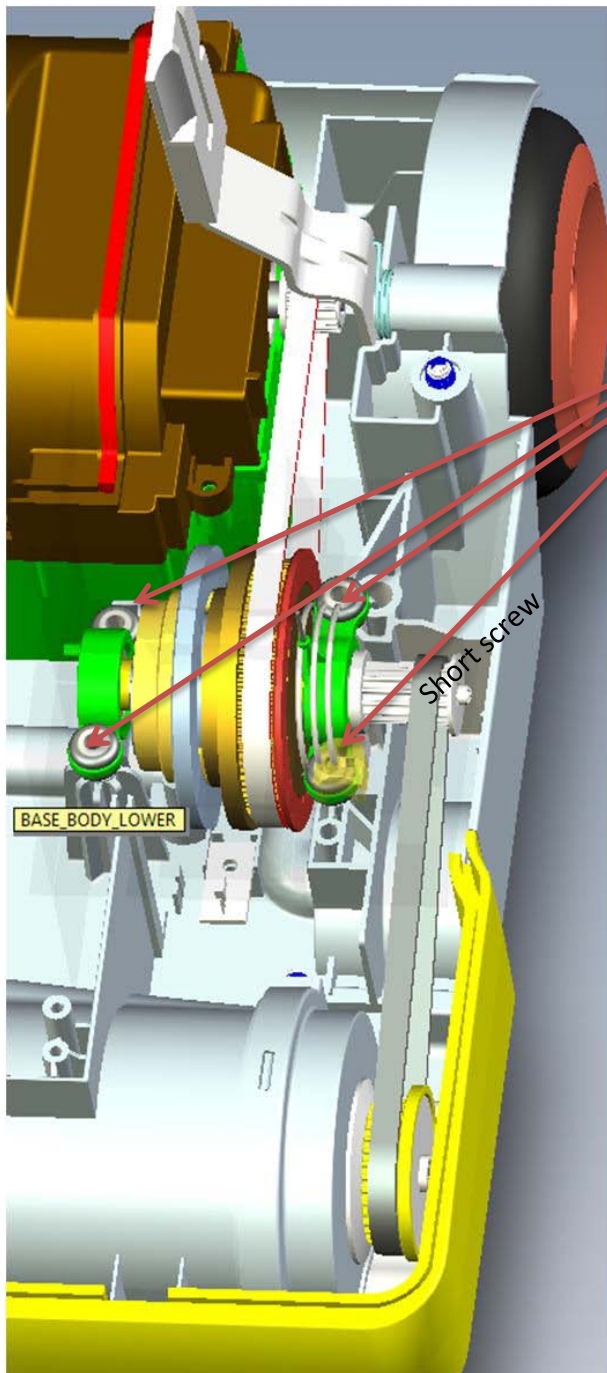
Original design had larger holes for the springs and pads. This allowed internal parts more movement and clutch to make unwanted noise >holes reduced for improved sound

To remove cover, lift from rear as nozzle will pivot off of the front bumper area.



Move bracket back and out of the way so right belt cover can be pulled up vertically and out of the way.





Remove 4 screws from Torque pulley which will allow motor belt and brush drive belt to be removed.

>Note

>>be sure to replace Torque pulley screws back exactly into the same holes as the front / right screw is shorter than the other 3.

Follow same procedure to complete.
Replace the belt cover and nozzle cover.